

Appendix-C

An outline of the districts of Assam according to Census Report 2011.

1. Kokrajhar District

Area (in sq km.)	3296.00
District Total Population	887,142
Hindu	529068
Muslim	252271
Sex Ratio	959
Density (Persons per sq Km.)	269
Literacy	65.22

2. Dhuburi District

Area (in sq. km.)	2176.00
District Total Population	1949258
Hindu	388380
Muslim	1553023
Sex Ratio	953
Density (Persons per sq Km.)	896
Literacy	58.34

3. Goalpara District

Area (in sq. km.)	1824.00
District Total Population	1008183
Hindu	347879
Muslim	579929
Sex Ratio	964
Density (Persons per sq km.)	553
Literacy	67.37

4. Barpeta District

Area (in sq Km.)	2282.00
District Total Population	1693622
Hindu	492966
Muslim	1198036
Sex Ratio	953
Density (Persons per sq. km.)	742
Literacy	63.81

5. Morigaon District

Area (in sq. km.)	1551.00
District Total Population	957423
Hindu	451882
Muslim	503257
Sex ratio	967
Density (Persons per sq. km.)	617
Literacy	68.03

6. Nagaon District

Area (in sq. km.)	3973.00
District Total Population	2823768
Hindu	1225246
Muslim	1563203
Sex ratio	962
Density (Persons per sq Km.)	711
Literacy	72.37

7. Sonitpur District

Area (in sq. km.)	5204.00
District Total Population	1924110
Hindu	1422824
Muslim	350536
Sex ratio	956
Density (Persons per sq Km.)	370
Literacy	67.34

8. Lakhimpur District

Area (in sq. km.)	2277.00
District Total Population	1042137
Hindu	797130
Muslim	193476
Sex ratio	968
Density (Persons per sq. km.)	458
Literacy	77.20

9. Dhemaji District

Area (in sq. km.)	3237.00
District Total Population	686133
Hindu	655052
Muslim	13475
Sex ratio	953
Density) (Persons per sq. km.)	212
Literacy	72.70

10. Tinsukia District

Area (in sq. km.)	3790.00
District Total Population	1327929
Hindu	1181347
Muslim	48373
Sex ratio	952
Density (Persons in sq. km.)	350
Literacy	69.66

11. Dibrugarh District

Area (in sq. km.)	3381.00
District Total Population	1326335
Hindu	1198401
Muslim	64526
Sex ratio	961
Density (Persons per sq. km.)	392
Literacy	76.05

12. Sibsagar District

Area (in sq. km.)	2668.00
District Total Population	1151050
Hindu	1007277
Muslim	95553
Sex ratio	954
Density (Persons per sq. km.)	431
Literacy	80.41

13. Jorhat District

Area (in sq. km.)	2851.00
District Total Population	1092256
Hindu	1008219
Muslim	54684
Sex ratio	962
Density (Persons per sq. km.)	383
Literacy	82.15

14. Golaghat District

Area (in sq. km.)	3502.00
District Total Population	1066888
Hindu	917426
Muslim	90312
Sex ratio	964
Density (Persons per sq. km.)	305
Literacy	77.43

15. Karbi-Anglong District

Area (in sq. km.)	10434.00
District Total Population	956313
Hindu	766000
Muslim	20290
Sex ratio	951
Density (Persons per sq. km.)	92
Literacy	69.25

16. Dima Hasao District

Area (in sq. km.)	4888.00
District Total Population	214102
Hindu	143593
Muslim	4358
Sex ratio	932
Density (Persons per sq. km.)	44
Literacy	77.54

17. Cachar District

Area (in sq. km.)	3786.00
District Total Population	1736617
Hindu	1038985
Muslim	654816
Sex ratio	959
Density (Persons per sq. km.)	459
Literacy	79.34

18. Karimganj District

Area (in sq. km.)	78.22
District Total Population	1228686
Hindu	521962
Muslim	692489
Sex ratio	963
Density (Persons per sq. km.)	679
Literacy	78.22

19. Hailakandi District

Area (in sq. km.)	1327.00
District Total Population	659296
Hindu	251194
Muslim	397653
Sex ratio	951
Density (Persons per sq. km.)	497
Literacy	74.33

20. Bongaigaon District

Area (in sq. km.)	1093.00
District Total Population	738804
Hindu	359145
Muslim	371033
Sex ratio	966
Density (Persons per sq. km.)	676
Literacy	69.74

21. Chirang District

Area (in sq. km.)	1923.00
District Total Population	482162
Hindu	320647
Muslim	109248
Sex ratio	969
Density (Persons per sq. km.)	251
Literacy	63.55

22. Kamrup District

Area (in sq. km.)	3105.00
District Total Population	1517542
Hindu	877495
Muslim	601784
Sex ratio	949
Density (Persons per sq. km.)	489
Literacy	75.55

23. Kamrup Metropolitan

Area (in sq. km.)	955.00
District Total Population	1253938
Hindu	1064412
Muslim	151071
Sex ratio	936
Densit (Persons per sq. km.)	1313
Literacy	88.71

24. Nalbari District

Area (in sq. km.)	1052.00
District Total Population	771639
Hindu	491582
Muslim	277488
Sex ratio	949
Density (Persons per sq. km.)	734
Literacy	78.63

25. Baksa District

Area (in sq. km.)	2457.00
District Total Population	950075
Hindu	782901
Muslim	135750
Sex ratio	974
Density (Persons per sq. km.)	387
Literacy	69.25

26. Darrang District

Area (in sq. km.)	1585.00
District Total Population	928500
Hindu	327322
Muslim	597392
Sex ratio	954
Density (Persons per sq. km.)	586
Literacy	63.08

27. Udalguri District

Area (in sq. km.)	2012.00
District Total Population	831668
Hindu	612425
Muslim	105319
Sex ratio	973
Density (Persons per sq. km.)	413
Literacy	65.41

Publications

Publications

1. Borah, M and Borah, S. Fertility, Education and Growth of Population in Assam: A Statistical Analysis. *International Journal of Mathematical Archive*, 6(5):170-174, 2015.
2. Borah, S. and Borah, M. Fertility, Parity Progression Ratio and Population Growth of Assam: A Statistical Analysis. *International Journal for Research in Applied Science & Engineering Technology*, 4(6): 214-221, 2016.
3. Borah, M and Borah, S. Classification and Ranking of Districts in Assam Based on Growth of Population. *IOSR Journal of Mathematics*, 12(5): 47-55, 2016.
4. Borah, S. and Borah, M. Statistical evaluation of demographic disparities of two communities of Assam. *International Journal of Applied Mathematics and Statistical Sciences*, 6(4): 99-106, 2017.
5. Borah, S. and Borah, M. District Level Fertility Differentials and Population Growth of Assam. *International Journal of Trend in Research and Development*, 4(4): 32-37, 2017.

Proceedings of the National Seminar

1. Borah, S. Investigation of the Social Factors that Affect the Fertility Pattern in Assam. *Science, Technology and Their Impact on Society with Special Reference to North-East India*, Jorhat College (Amal.), Jorhat, 29th & 30th August, 2014, Page No. 364-377, **ISBN: 978-93-83230-42-6**.

Appendix- A

A.1: Districts with code

District Code	District Name
[1]	Kokrajhar
[2]	Dhuburi
[3]	Goalpara
[4]	Barpeta
[5]	Morigaon
[6]	Nagaon
[7]	Sonitpur
[8]	Lakhimpur
[9]	Dhemaji
[10]	Tinsukia
[11]	Dibrugarh
[12]	Sibsagar
[13]	Jorhat
[14]	Golaghat
[15]	KarbiAnglong
[16]	Dima-Hasao
[17]	Cachar
[18]	Karimganj
[19]	Hailakandi
[20]	Bongaigaon
[21]	Chirang
[22]	Kamrup
[23]	Kamrup(M)
[24]	Nalbari
[25]	Baksa
[26]	Darrang
[27]	Udalguri

A.2: Religion wise population of Assam since 1901(in percentage)

Year	Hindus	Muslims
1901	71.03	12.40
1911	67.95	16.69
1921	67.33	19.41
1931	70.09	23.41
1941	46.84	25.72
1951	72.01	24.68
1961	71.33	25.26
1971	72.51	24.56
1991	67.13	28.43
2001	64.89	30.92
2011	61.46	34.22

Source: Census Report of India, Government of India

A. 3: Density of Assam and India

Year	Density (Person per sq.km.)	
	Assam	India
1901	42	77
1911	49	82
1921	59	81
1931	71	90
1941	85	103
1951	102	117
1961	138	142
1971	186	177
1981	*230	230
1991	286	267
2001	340	325
2011	398	382

*Estimated Value

Source: Census Report of India, Government of India

A. 4: CBR for Hindu and Muslim of Assam

District Code	CBR	
	Hindu	Muslim
[1]	15.03	22.34
[2]	15.21	26.36
[3]	13.64	27.1
[4]	15.17	24.32
[5]	12.85	24.59
[6]	16.11	24.02
[7]	14.34	23.48
[8]	17.26	23.64
[9]	15.15	16.33
[10]	16.97	14.57

[11]	15.72	14.96
[12]	15.14	14.53
[13]	16.06	14.01
[14]	16.06	14.01
[15]	15.56	21.14
[16]	17.26	22.95
[17]	17.93	20.77
[18]	15.62	25.63
[19]	15.77	20.76
[20]	17.43	27.94
[21]	15.1	24.14
[22]	15.61	22.57
[23]	15.48	15.3
[24]	13.07	18.35
[25]	12.63	21.33
[26]	14.87	25.23
[27]	14.16	22.63

A.6: TFR for Hindu and Muslim of Assam

District Code	TFR	
	Hindu	Muslim
[1]	1.8	2.9
[2]	1.6	3.5
[3]	1.7	3.5
[4]	1.4	3.2
[5]	1.9	3.4
[6]	1.6	3.2
[7]	1.8	3.1
[8]	1.9	3
[9]	2.0	2.2
[10]	1.8	1.7
[11]	1.7	1.6
[12]	1.8	1.5
[13]	1.6	1.5

[14]	1.7	2.1
[15]	2.2	2.8
[16]	2.1	2.8
[17]	1.8	2.6
[18]	1.9	3.5
[19]	2.1	2.8
[20]	1.2	3.7
[21]	1.8	3.3
[22]	1.4	2.9
[23]	1.3	1.6
[24]	1.4	2.3
[25]	1.7	2.7
[26]	1.6	3.4
[27]	1.8	3.1

A.7: Level of education of two communities (in percentage)

Level of education	Hindu	Muslim
Informal School	2.2	3.5
Below Primary	6.1	8.9
Primary	19.9	32.7
Middle	27	27.3
Secondary	23.2	16
Higher Secondary	12.5	7.3
Graduate	7.1	3.5
Post Graduate	1.1	0.4

Source: HDR Survey, Assam, 2013

A.6: General Fertility Rate of Assam

Districts Code	Hindu	Muslim
[1]	54.642	94.315
[2]	48.952	112.035
[3]	52.670	113.415
[4]	44.090	104.821
[5]	57.809	107.175
[6]	50.996	102.632
[7]	54.889	99.209
[8]	57.990	97.998
[9]	63.820	65.067
[10]	56.960	52.490
[11]	52.577	49.897
[12]	56.540	47.556
[13]	48.875	47.304
[14]	54.724	68.025
[15]	66.053	84.459
[16]	63.758	90.411
[17]	56.840	79.746
[18]	57.933	107.786
[19]	64.316	85.736
[20]	50.735	118.203
[21]	56.374	102.724
[22]	44.508	90.778
[23]	39.223	51.536
[24]	43.578	74.332
[25]	52.029	86.522
[26]	48.037	107.531
[27]	53.761	96.682

A.8: Gross Reproductive Rate(per thousand) of two communities

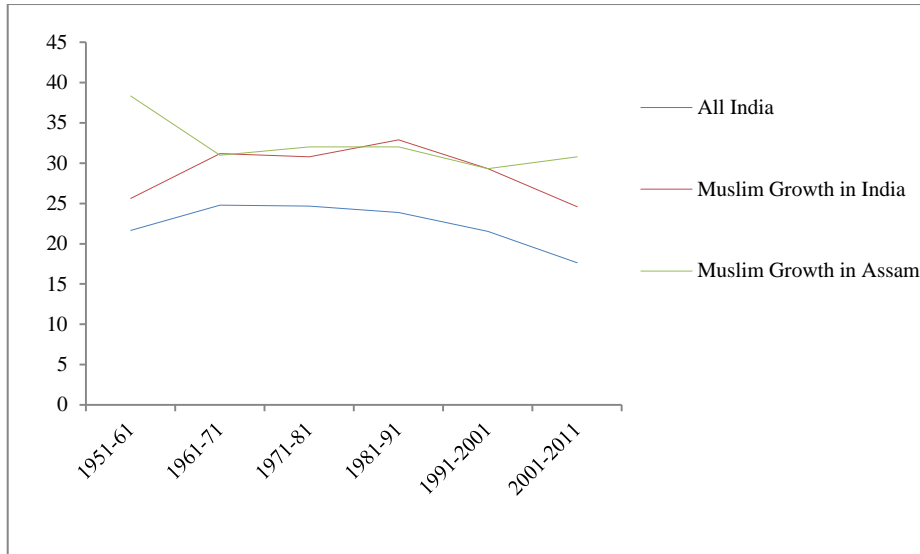
District Code	Hindu	Muslim
[1]	871.68	1460.43
[2]	749.02	1691.76
[3]	822.52	1699.49
[4]	696.47	1556.89
[5]	916.07	1643.01
[6]	809.61	1563.68
[7]	873.30	1498.37
[8]	894.29	1438.27
[9]	978.11	880.44
[10]	874.92	803.53
[11]	810.86	745.98
[12]	869.92	713.85
[13]	763.79	771.29
[14]	843.10	1007.32
[15]	1045.92	1283.21
[16]	1045.26	1345.73
[17]	710.56	749.78
[18]	921.38	1693.44
[19]	1002.85	1330.21
[20]	794.59	1702.85
[21]	866.59	1545.42
[22]	689.02	1365.88
[23]	600.67	777.95
[24]	676.51	1141.00
[25]	803.41	1314.25
[26]	776.99	1581.66
[27]	846.53	1492.49

A.9: Mean of selected indicators

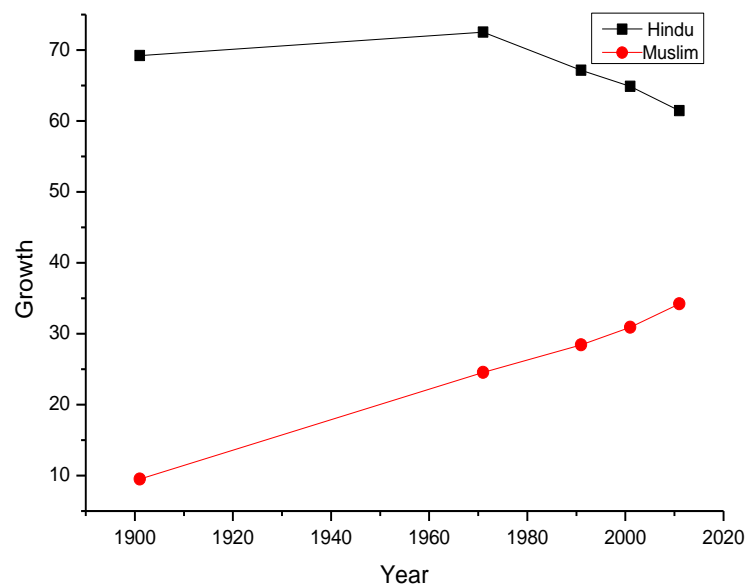
Variable	Mean	
	Hindu	Muslim
TFR	1.726	2.757
Total Female workers	30.28	21.22
Complete Fertility Rate	2.127	3.00
Child Women Ratio	151.174	245.423

Appendix-B

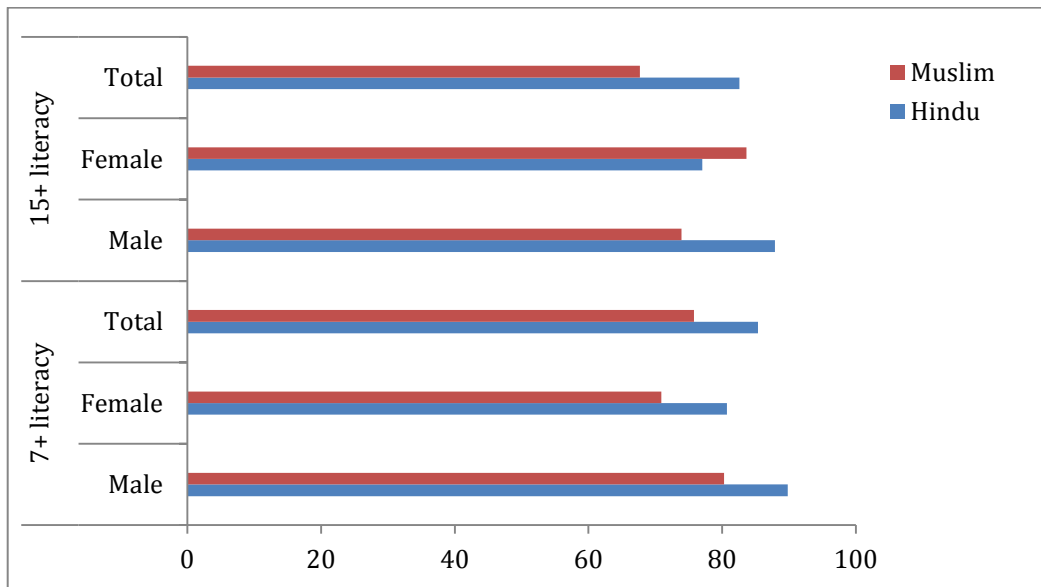
B.1: Growth rate of India, growth rate of Muslim in Assam and India



B. 2: Population growth of Hindu and Muslim in Assam from 1901-2011

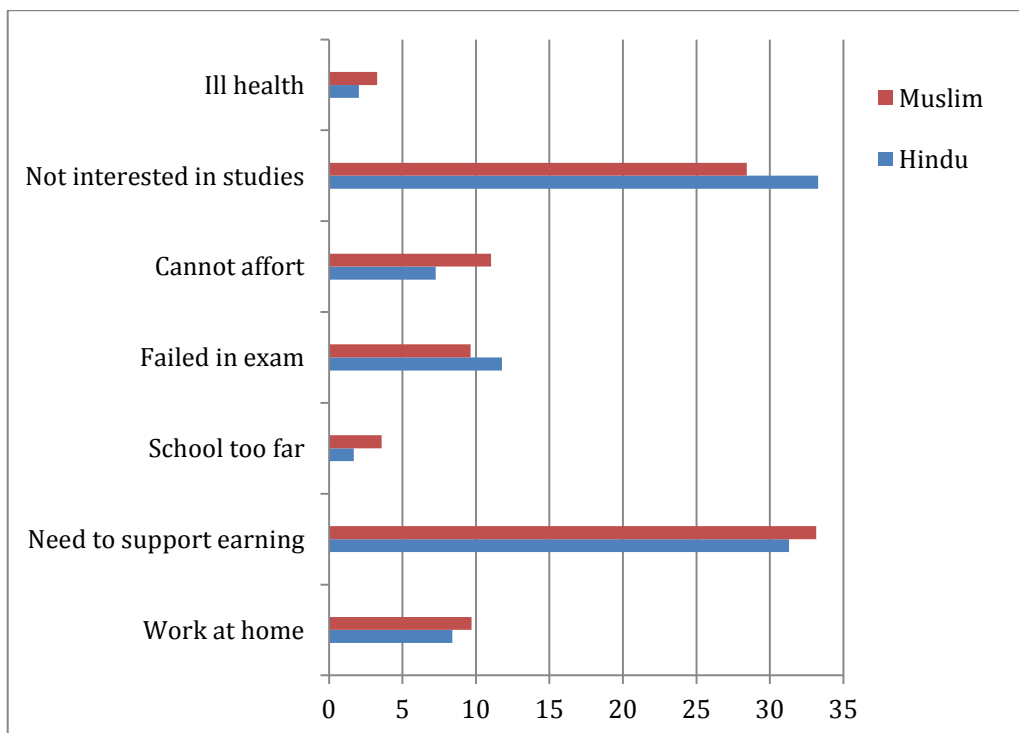


B.3: Literacy percentage in the 7+ and 15+ age category



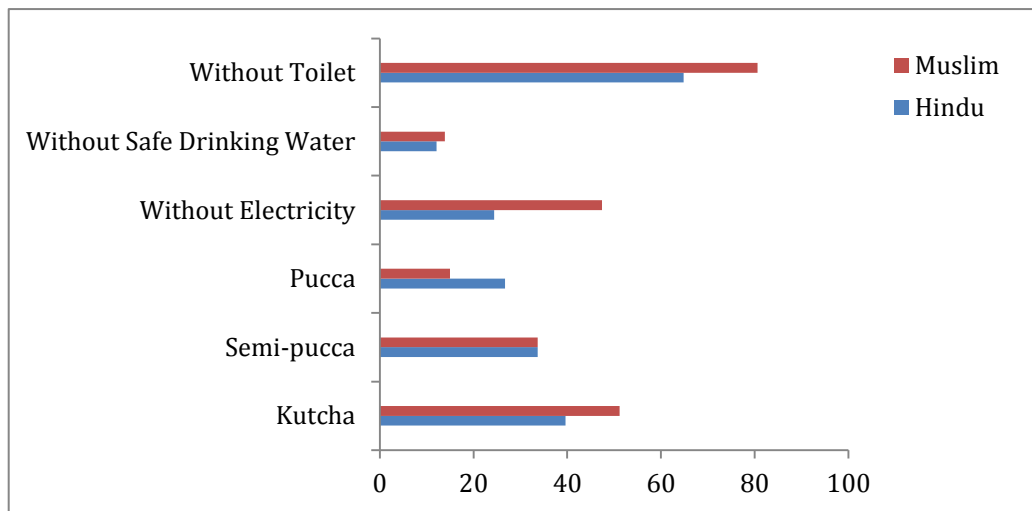
Source: HDR Survey, Assam, 2013

B.4: Dropping out of schools in Assam with reasons (in percentage)



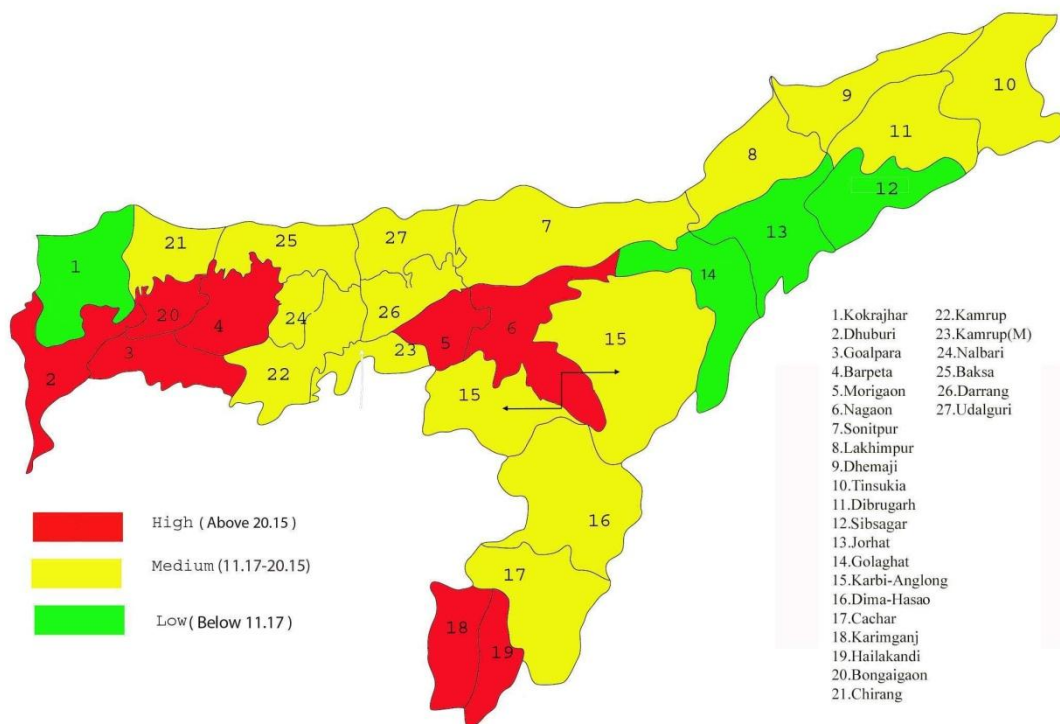
Source: HDR Survey, Assam, 2013

B.5: Socio-demographic status of two communities in Assam (in percentage)



Source: HDR Survey, Assam, 2013

B.6: Decadal Growth Rate of Assam according to 2011 Census data



Source: Census Report of India, Government of India